

G
SHING



**IMPRESSION
MATERIAL**



**BONDING
ADHESIVE
& ETCHANT**

PRODUCT
CATALOGUE
2023-2024

Medicept
D E N T A L

EXTREME

A-SILICONE IMPRESSION MATERIAL



- Two-Phase, one-step A-silicone impression system.
- Short intraoral setting time (2min)
- High consistency putty, regular setting.
- Low consistency wash, light bodied
- Super hydrophilic, thixotropic, crisp detail

Ref no: 5010 -Extreme Putty - 250ml base + 250ml catalyst

Ref no: 5011 - Extreme Lite - 2 x 50ml Cartridge + 12 Mixing tips

EXTREME

ADHESIVE FOR A SILICONE



For Adhesion of A-silicone impression material to plastic and custom trays, fast drying. Can be applied more easily and economically than conventional adhesives with watery, thin-flowing consistency.

- Very high adhesion.
- Color Orange: Transparent.

Ref No : 9001 -15 ml Bottle

ORANGEBITE

BITE REGISTRATION MATERIAL



- A-silicone based, medium consistency - medium bodied, thixotropic.
- Extremely short time in the mouth (60 sec.),
- Maximum final hardness, approx. 45 Shore D, easy processing.
- Colour : Base orange, Catalyst white 1:1
- Flavour : Orange

Ref No : 5013 - 2 x 50ml Cartridge 12 Mixing Tips

EXTREME

MONO PHASE IMPRESSION SILICONE



Extreme Mono is a medium tray consistency for single step impression-taking or mixed technique, with distinct snap set.

Ref No : 9012 - 2 x 50ml Cartridge & 12 x Mixing Tips

TRAY

ADHESIVE



A paint on tray adhesive for use with all alginates; it helps to keep the alginate firm in the tray during removal from the mouth. Comes with a convenient brush inside the cap.

Ref No : 5006 -30ml bottle

X-RAY FILMS

wave-x

RADIOGRAPHIC FILM FOR DENTAL DIAGNOSTICS



- High-quality double-emulsion intraoral X-ray film
- High Speed (ISO class E)
- High Contrast and fine Grain
- High Image quality and detail definition
- For intraoral X-ray diagnostics only

Ref No : 9014 -Pkt of 150 Film, ISO / ANSI, 31 x 41 mm / Size 2

Medi-Pak

KNITTED RETRACTION CORD



- Interlocking Knitted Loops - Unsurpassed retraction/displacement, Easy to control and place, Will not become entangled in burs or packers
- Non-impregnated, Holds more hemostatic solution than other cords
- Various Sizes - Useful for a variety of procedures and teeth.

Ref No : 5018 - (1) Bottle containing 8 feet (244 cm) of cord.

Available in the following sizes:
#000, #00, #0, #1, #2 & #3

HemoStat Gel

HEMOSTATIC GEL



- 20% ferric sulfate hemostatic gel
- Stops bleeding in seconds, saving chair time and decreasing the need for impression remakes.
- Hemostatic agent for crown and bridge procedures
- Viscous - Stays in place when delivered
- Unique Binding & Coating Agents
- Easy to Deliver with Infuser tip

Ref No : 5015 - 5ml Syringe, 5 Delivery Tips

HemoStat Clear

CLEAR HEMOSTATIC GEL



- 25% aluminum chloride formula rapidly eliminates minor bleeding.
- Recommended for anterior restorations,
- For use in the esthetic zone to prevent coagulum and hemostatic residue from adhering to restorations
- Colorless - Will not leave a colored residue after procedures in esthetic zone
- Viscous - Non-dripping

Ref No : 5016 - 5ml Syringes, 5 Delivery Tips

XtraLute

RADIOPAQUE GLASS IONOMER LUTING CEMENT



- Exceptional strength - Long lasting cementation
- Good radiopacity - Shows clearly under x-ray
- Easy mixing - To reduce surgery time
- Excellent biocompatibility - Minimal puplal reaction
- Compressive Strength 122MPa

Ref No : 2003 - 15g Powder / 10ml Liquid
Ref No : 2004 - 35g Powder / 20ml Liquid

XtraCem

RADIOPAQUE GLASS IONOMER RESTORATIVE CEMENT



- Excellent early translucency - Superior aesthetics
- Exceptional strength - Long lasting restoration
- Packable consistency - For ease of handling
- Easy mixing - To reduce surgery time
- Compressive Strength 228 MPa

Ref No : 2001 - 15g Powder / 10ml Liquid

XtraCem-P

RADIOPAQUE GLASS IONOMER POSTERIOR RESTORATIVE CEMENT



- Superb translucency - Excellent appearance
- Aesthetic match to natural tooth - Visually superior
- High compressive strength - Durable restorations
- Adheres chemically to tooth structure - No need to etch or bond
- Compressive Strength 260 MPa.

Ref No : 2006 - 15g Powder / 10 ml Liquid

XtraCem-S

RADIOPAQUE GLASS IONOMER SILVER REINFORCED CEMENT



- Exceptional strength
- Good Radiopacity
- Long lasting restorations
- Shows clearly under x-ray
- Prevention of secondary caries
- Durable restorations
- To reduce surgery time
- Compressive Strength 269MPa

Ref No : 2005 - 15g Powder / 10 ml Liquid

XtraCem-LC

RADIOPAQUE LIGHT-CURED GLASS IONOMER CEMENT



A light curing, resin reinforced glass ionomer restorative. The material features both chemical and light curing mechanisms to ensure the best mix of early strength and command setting. Offering both excellent compressive and flexural strengths to provide durable restorations.

- Compressive Strength 221MPa

Ref No : 2002 - 12g Powder / 5g Liquid

Glass Ionomer Universal Liquid



A Universal Glass Ionomer Liquid which can be used with glass ionomer restorative and luting.

Ref No : 2011 - 15ml Liquid



DUAL-CURE SELF-ADHESIVE RESIN CEMENT



Exceptional bond strength - one of the most retentive self-adhesive auto-mix cements available • Dual-cure-Light-cure or self-cure for maximum versatility • Convenient auto-mix delivery system - direct and accurate one-step placement with minimal waste - no trituration required! • Contains fluoride - provides a sustained fluoride release to minimize the potential for caries • Multiple applications - Perfect for PFM, Zirconia and Alumina-based restorations, and posts • Versatile shade selection - Choose from A2 and Translucent

Ref No : 5009 - 5ml Automix Dual-Barrel Syringe
Shade : A2 & Translucent



SEMI PERMANENT IMPLANT CEMENT



Implalute cement for superstructures on a resin base 4:1. Specially designed for semipermanent fixing on customised abutments, abutments with reduced adhesion surface or particularly small abutments. With reinforced adhesion and compressive strength. The restoration can still be removed without damage even after extended time in position. Compatible with all material combinations, dual curing system. Colour: natural opaque.

Ref No : 9002 - 5ml mini-mix Syringe, 10 Mixing Tips



MINERAL TRIOXIDE AGGREGATE



Medicept MTA is a superior root repair material, used for retreatment of perforations during root canal therapy, as an apical plug during apexification, treatment of internal resorption and root end filling. It may also be used for pulp-capping, pulpotomy or as a base or liner. Hydration of the fine powder particles forms an impermeable barrier once fully set.

Ref No : 9003 - 1g Powder, 7 Ampules

ZinCem

ZINC PHOSPHATE CEMENT



- Adhesive to enamel, dentine and non precious metals
- Wide range of uses
- Proven formula - Reliability assured
- Radiopaque - Shows clearly under x-ray
- Easy to mix - To reduce surgery time
- Compressive Strength 148 Mpa

Ref No : 2008 - 90g Powder / 30 ml Liquid
Ref No : 2007 - 30g Powder / 15 ml Liquid

PolyCem

POLYCARBOXYLATE CEMENT



- Sustained fluoride release
- Prevention of secondary caries
- Easy mixing - To reduce surgery time
- Adhesive to enamel, dentine and non precious metals
- Wide range of uses
- Contains no phosphoric acid - Minimal pupal reaction
- Radiopaque - Shows clearly under x-ray
- Compressive Strength 96 Mpa

Ref No : 2008 - 90g Powder / 30 ml Liquid
Ref No : 2009 - 30g Powder / 15ml Liquid

HydroCal

CALCIUM HYDROXIDE PASTE



- HYDROCAL is a Calcium Hydroxide based two paste system used as a liner in deep cavities and for direct and indirect pulp capping
- Convenient paste mixing product in tube/tube presentation
 - Rigid, self-setting radiopaque composition
 - Will not inhibit the polymerisation of acrylic and composite restoration
 - Withstands condensation of amalgam

Ref No : 9005 - 13g Base Paste, 11g Catalyst Paste

HydroCal

LIGHT CURE CALCIUM HYDROXIDE CAVITY LINER



Hydrocal LC is a unique light-cured, radiopaque, dentinadhering liner and base material containing calcium hydroxide and calcium hydroxyapatite in a urethane dimethacrylate (UDMA) base. It is a highly filled resin (for a liner) with minimal shrinkage and water absorption. Hydrocal LC has a higher viscosity than conventional liners, eliminating the need for a ball-type applicator. Its superior strength and water insolubility make Hydrocal LC the material of choice under composite, amalgams & gold

Ref No : 5007 - 5g Syringe & 3tips

RESTORATIVE & FILLING MATERIALS

FLASH

NANO HYBRID COMPOSITE



Medicet's new restorative is an advanced composite for both anterior and posterior use.

- 2018** - Flash Starter Kit
3x4gm syg. 5ml Bond, 3g Etch, 50 microbrush
Shade: A1, A2, A3
- 3004** - Flash Syringe
Refill Pack 1 x 4g
Shade: A1, A2, A3, A3.5, B1, B2, OA2
- 3001** - Flash Kit
6 x 5 g Flash Syringes • 1 x 2 g SoloEtch Syringe
50 x Micro Applicators • 1 x 5 ml Bond Plus NT
1 x 2 g Flow Plus Syringe • Mixing Pad • Mixing Wells
Micro Tips for SoloEtch • Instruction Sheet
Shade: A1, A2, A3, A3.5, B1, OA2

FlowPlus

FLOWABLE LIGHT CURE COMPOSITE



An advanced light curing flowable composite material. Offering controlled light diffusion for excellent aesthetics and visual appearance. Exceptional handling based on flow properties combined with superb strength and high elasticity for durable restorations. Radiopaque, unlike most other flowable composites.

Ref No : 3005 - 1 x 2g Syringe & 5 Tips
Shade: A1, A2, A3, A3.5, B2



Artiz

DUAL CURE COMPOSITE WITH ZIRCONIUM DIOXIDE FOR CORE BUILD-UPS AND POST CEMENTATION



- One material, two indications: core build-up and post-cementing
- Contains zirconium dioxide
- Very high flexural and compressive strength
- Excellent flow properties
- Elasticity behavior comparable to natural tooth substance
- AUTOMIX-Syringe

Ref No : 3002 - 2 x 5ml/9g Automix Syringes, 20 Mixing tips, 20 Intraoral tips
Shade : Shade A3



Itit

TEMPORARY CAVITY FILLING MATERIAL



Ready-to-use filling material for temporary filling and sealing. Setting in the mouth under the effect of saliva, great adhesive strength in the cavity, excellent marginal sealing, easy to remove.

Colour: white opaque

Ref No : 5003 - 30g Jar

PROTEC

PIT & FISSURE SEALANT



- Thixotropic, Low-Viscosity - Able to flow into occlusal grooves
- 58% Filled, Low polymerization shrinkage, Superior strength
- Fluoride Releasing - Anti-caries benefit from sustained, fluoride release along margins of restoration
- Radiopaque - Visible on x-ray

Ref No : 5017 - 1.2ml Syringes, 3 Delivery Tips
Shade : Milk White Colour

BOND Plus SE

**SINGLE COMPONENT,
SELF-ETCH DENTAL ADHESIVE**



A one step self etching bonding agent. No need to use etchants or primers prior to applying the adhesive. Just apply adhesive, light cure and you are ready to apply the composite restorative material. Bond strength and biocompatibility are both excellent and also the material is completely HEMA free. A true seventh generation bond.

Ref No : 4003 - 5ml Bottle

BOND Plus NT

**TOTAL-ETCH SINGLE-COMPONENT
ADHESIVE SYSTEM**



A single component prime and bond material, suitable for bonding composites and compomers, to enamel dentine and metal.

The material is in the form of a viscous, non-thixotropic light curable liquid that has the ability to moisten and penetrate dentine.

Ref No : 4007 - 5ml Bottle

BOND Plus

**LIGHT CURING ONE STEP DENTIN
ENAMEL BONDING ADHESIVE**



A 5th generation, single component, multi-use adhesive, which is hydrophilic and suitable for use on moist dentin (wet bonding technique). The adhesive incorporates aspects of primer and bonding resin in a single bottle designed to bond composites and compomers to dentin and enamel as well as treated amalgam, metal and ceramic surfaces.

Ref No : 5001 - 7ml Bottle

SoloEtch

ETCHING GEL



Medicept Dental's Solo Etch 37% phosphoric is a medium viscosity etchant gel used for etching enamel and dentin prior to bonding procedures. Solo Etch is thixotropic, stays where placed and will not run. Does not dry out and has a long shelf life when properly stored. Washes off clean.

Ref No : 5005 - 50 ml Syringe & 50 Tips

Ref No : 5004 - 1 x 2g Syringe & 3 Tips

SoloEze

DESENSITIZER



SoloEze is a Hema Free Desensitizing solution Prevents and rapidly alleviates enamel and dental hypersensitivity when filling and cementing, for temporary restorations, sensitive cervical areas.

Ref No : 5002 - 7ml bottle

reviver

SILICON DENTURE RELINING MATERIAL



Long-term soft relining material for chair-side use, A-silicone based, cold curing, biocompatible. The material is directly applied from the cartridge onto the denture base. Strong bonding to the denture acrylic. Also suitable for application with the indirect technique. Primer with colour indicator for better application check. Colour: Gingiva

Ref No : 9006 - 50 ml Cartridge, 7 Mixing Tips, 2x7ml Polish, 5ml Primer

AccuTemp

TEMPORARY CROWN AND BRIDGE MATERIAL



Accutemp is a Bis-acrylic composite 10:1, self curing, for high-quality short- and long-term provisionals. Natural aesthetics and fluorescence, in all lighting conditions. Exceptional bending strength, optimal adaptation and fitting. Easy surface finishing (grinding, polishing). Tasteless and long-term colour stable during the whole use. Direct application with Automix2 cartridge system. Shade: A1, A2, A3.

Ref No : 9007 - 50ml Cartridge, 10 Mixing Tips
Shade : A1, A2, A3

AccuCem

AUTOMIX EUGENOL-FREE TEMPORARY CEMENT



Accucem is an automix non-eugenol temporary crown and bridge cement. It shows excellent adhesion to temporary crown and bridge materials, but it can residue free removed from the tooth.

Due to its non-eugenol formulation it does not influence the setting of resin-based filling and luting materials. Delivered in easy to mix MINIMIX@-syringes, it can be applied directly

Ref No : 9011 - 1 x 5ml Automix Syringe & 6 x Automix Tips

PROTEC

PROPHYLAXIS PASTE



A blend of abrasives selected to ensure optimum removal of plaque and tartar without any appreciable abrasion to enamel. The thixotropic properties of the paste are carefully controlled to ensure easy application without undesirable spattering at the rotation speeds required for prophylaxis. Protec contains only natural flavourings, are fluoride free and are available in medium and coarse grades.

Ref No - 250g Jar - 6001 Orange, 6002 Mint, 6003 Strawberry, 6004 Bubblegum
50g Jar - 6005 Orange, 6006 Mint, 6007 Strawberry, 6008 Bubblegum

RELINING MATERIAL

FINISHING & POLISHING

selfpost
GLASS FIBER POST



Ref No :
8005 Pack of 10 Post - Size 0,1,2, 3 & 4
8006 Pack of 1 Drill - Size 0,1,2, 3 & 4
8007 Selfpost Starter Kit
 3 Post each of size 0,1,2
 1 Drill each of size 0,1,2

Unique Shape

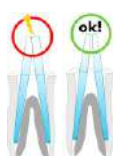
The double conical shape of Selfpost

The greater diameter can be found near the point where, on average, the post emerges from the tooth. In this way, stresses are discharged by the more resistant portion of the post, giving a great advantage in the overall strength of the restored tooth

Benefit

- Aesthetic
- Translucent
- Radiopaque
- Biocompatible
- Highly resistant
- Resistant to sterilization in autoclave
- Resilient (greater resistance to unexpected shocks)
- Elasticity modulus when bending greater than that of the dentin
- High level of surface roughness and better adhesion to cements

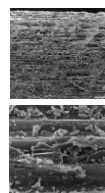
Advantages



The conicity of the coronal portion reduces the interference with the residual dental structure or with the other post and improves the insertion into the canal.

The shapes and diameters have been calculated for use with Ni-Ti, as they accurately reproduce the conicity, which are 0.04, 0.06 and 0.08

The Highly Retentive Surface



The surface roughness of the posts is extremely important as this influences the adhesion* strength with the adhesive cements used

*Microtensile bond strength of fiber post: effect of surface roughness



The Range

SIZE	#0	#1	#2	#3	#4
Maximum diameter	1.00	1.30	1.60	1.80	2.00
Point diameter	0.56	0.65	0.72	0.88	1.04
Conicity %	0.04	0.06	0.08	0.08	0.08
Length	19	19	19	19	19

Endodontic Drill



SureSeal



ZINC OXIDE EUGENOL-BASED ENDODONTIC CEMENT

- Barium Sulfate gives radiopacity for follow up.
- Sealing endodontic obturations.
- Cementation of Gutta Percha points or silver points, in the obturation of these root canals.
- Expands upon setting to create a positive seal.
- Powder/liquid presentation to adjust the cement viscosity to the technique required

Ref No : 3003 - 15ml bottle, 40gm powder
Ref No : 3021 - 10ml bottle, 15gm powder

biofill
Root Canal Filling Material



ROOT CANAL FILLING MATERIAL SILVER FREE

Biofill powder and resin are mixed to produce a root canal filling material of excellent sealing capacity. As a result of its close adaptation to the root canal walls and its very small contraction during setting, Biofill allows tightly sealing root canal obturation of excellent tissue compatibility.

Ref No : 4004 - 8g Powder/10g Resin

RC-Plus



ROOT CANAL PREPARATION CREAM FOR CHEMO-MECHANICAL PREPARATION OF ROOT CANALS.

RC-Plus unique formulation of glycol, urea peroxide and EDTA in a special water soluble base helps remove calcifications and lubricates the canal to permit more efficient instrumentation. Whether you prefer finger or engine driven instruments, RC-Plus allows reamers and files to move easily without binding. RC-Plus is also excellent for use with apex locators as it permits consistently reliable readings.

Ref No : 4002 - 9g Syringe
Ref No : 9009 - 3g Syringe

SureSealXT



ROOT CANAL SEALER

Sure Seal XT is a paste/paste zinc oxide eugenol root canal sealer. It is light in color, non darkening, and radiopaque.

- Radiopaque • Barium sulfate • Low film thickness • Z O E-based formula • Low leakage and low dimensional change • Provides radiopacity while eliminating staining the tooth • Pastes mix easily to a smooth and creamy consistency for ease of use • For permanent obturation of the root canal space with the aid of obturation points

Ref No : 9004 - 8g Base Paste, 3.5g Accelerator Paste

Mixing Pad



Pack of 4

Ref No : 8003 - Pack of 4

PROTEC INTERDENTAL BRUSH REMOVE THE IMPURITIES



— Quality Material

— Perfect Grip



Easy to clean any teeth



Smooth bristles for no injury



Hygienic travel cap with each brush



- Protec Interdental Brush removes plaque and food particles
- Perfect for braces, bridges and tight tooth spaces, where a regular toothbrush cannot reach
- Angled for a better control and access between the tight spaces
- Hygienic travel cap with each brush
- 5 Interdental brushes in one blister pack

Available in :
Pack of 5 Narrow Space and Wide Space



RC-Prep



Over 40 years of clinical use and numerous publications demonstrate the clinical efficacy of RC-Prep for chemo-mechanical preparation of root canals. RC-Prep's unique formulation of glycol, urea peroxide and EDTA in a special water soluble base helps remove calcifications and lubricates the canal to permit more efficient instrumentation.

18g Jar.

Implant Cement



NON-EUGENOL TEMPORARY RESIN CEMENT FOR IMPLANT RETAINED CROWNS

- High retention - Long-term cementation
- Retrievability -- off when you need it
- Radiopaque -- Improves detection of excess cement
- Easy handling -- Two-stage cure features initial gel-phase in 2-2.5min for easy removal of excess cement. Rigid final set ensures marginal seal and firm retention.

3001450 Implant Cement Standard Pack
3001455 Implant Cement Value Pack
3001451 Automix Syringe Tips (25)

Enamel Pro® Varnish



5% NaF Fluoride Varnish

- Desensitizes: Enamel Pro Varnish has been shown to diminish hydraulic conductance by 73%.
- Delivers: Independent testing demonstrated Enamel Pro Varnish with ACP technology delivered 4x more fluoride uptake into the enamel than the leading brand transparent varnish.
- Occludes: ACP and fluoride provide semi-permanent occlusion with fluorapatite.

9007540 Strawberries 'n Cream 0.40ml - 35ct

Retraction Cap



Anatomic formed cotton caps work synergistically with Traxodent to quicken and assist retraction and hemostasis.

- Easily guides Traxodent into the sulcus
- Compression assists and quickens hemostasis
- Cotton absorbs fluids
- Anatomic form allows easy placement

9048255 - Size 5 (60)
9048253 - Size 3 (120)
9048251 - Size 1 (120)
9048260 Assorted (30) #5, (15) #1, (15) #3

Traxodent



HEMODENT ® PASTE RETRACTION SYSTEM

Easy, effective hemostasis and retraction. The sleek syringe with bendable tip permits easy application of Traxodent directly into the sulcus. After two minutes, it is rinsed, leaving an open, retracted sulcus. Traxodent is gentle, absorbent and fast. The soft paste produces gentle pressure on the sulcus while it absorbs excess crevicular fluid and blood. The aluminum chloride creates an astringent effect without irritating or discoloring surrounding tissue.

9007097 - Professional Trial pack
9007091 - Traxodent Value Pack
9007093 - Traxodent Starter Pack

High Quality Dental Products

DETAX

Made in Germany

Detaseal® hydroflow putty



- Soft initial consistency for perfect mixing results
- Ideal for preliminary impressions in the double impression technique
- Convenient and easy to remove due to: high, elastic recovery from deformation with medium final hardness and maximum tensile strength.
- Time-saving thanks to short mixing time and time in the mouth (only 2 minutes!)

02727 Standard packing putty, jar of base 250 ml - jar of catalyst 250 ml measuring scoops 2 pcs.

Detaseal® function



Precision impression material for functional impressions and functional border moulding. Addition curing, putty. Ideal smooth and supple consistency, easy to mould, well retaining its shape and volume. With defined plastic phase and prolonged setting time in the mouth. Optimum mixing check due to contrasting colours.
Colour: Base red, Catalyst yellow 1:1

02521 : Standard packing - dispenser of base 80 ml, dispenser of catalyst 80 ml, moulding syringe 1 pc.

Detaseal® hydroflow lite



- Easy-flow consistency, ultimate hydrophilia.
- Highest possible wetting capacity immediately after starting mixing (contact angle < 10)

02730 Standard packing regular set base + catalyst 2 x 50ml mixing cannulas, yellow 12 pcs.

mollosil® Plus



Long-term soft relining material for chairside use, A-silicone based, cold curing, biocompatible. The material is directly applied from the cartridge onto the denture base. Strong bonding to the denture acrylic. Also suitable for application with the indirect technique. Primer with colour indicator for better application check. Booklets for patients and grinding set inclusive.
Colour: gingiva

02353 Standard packing cartridge Automix 2 x 50ml, mixing cannulas pink 7pcs, primer bottle of 5ml, polish bottle of 2 x 7ml, grinding sleeve, good morning spray 5 x 15ml, pipettes 2 pcs.

tempofit® premium



High-end bis-acrylic composite 10:1, selfcuring, for accurately fitting, high-quality short and long-term temporaries. Natural dental aesthetics, brilliant translucent shades, even in variable light conditions. Extremely fracture-resistant, highest flexural and abrasion resistance. With a defined elastic phase, safe removal of temporaries, minimal curing temperature. Grinds and polishes extremely well.

03248 - A1 cartridge(75g) 50ml, mixing tips, 10:1
02201 - A2 cartridge(75g) 50ml, mixing tips, 10:1
02209 - A3 cartridge(75g) 50ml, mixing tips, 10:1
02217 - A3.5 cartridge(75g) 50ml, mixing tips, 10:1

Greenbite Apple



BITE REGISTRATION MATERIAL

Bite registration material, A-silicone based, medium consistency – medium bodied, thixotropic. Direct application onto teeth, short time in the mouth (60 sec.), maximum final hardness, approx. 45 Shore D, easy processing.
Colour: Base green, Catalyst yellow 1:1 With green apple flavour!

02641 : Standard packing - base + catalyst 2 x 50 ml, mixing cannulas, green 12 pcs. contouring tips 12 pcs.

mollosil®



Long-term relining material for chairside use, A-silicone based, permanently soft, cold curing. Secure bonding to the denture acrylic. For manual mixing, mixing ratio 1:1. Biocompatible, taste-and odourless. • Colour: gingiva

03005 Standard packing
Base-50ml, Catalyst-50ml, adhesive bottle 5ml, lustrol gloss varnish 2 x 6ml, pipettes 2 pcs.

02274 Starterkit
Base-30ml, Catalyst-30ml, adhesive bottle 5ml, lustrol gloss varnish 2 x 6ml, pipettes 2 pcs.

easyform LC



Ready-for-use modelling resin, lightcuring, as gel or paste, MMA-free. Very high fitting accuracy for multiple indications, particularly for casting. Burns off without residue, even with thicker layer. Matching viscosities of gel and paste for fast, accurate work. Dimensionally stable, no polymerisation delay, high final hardness and stability.

03376 : gel -3 x 3 g syringes, 10 application needles

tempofill 2



One-part composite material, For temporary treatment of cavities and fillings (inlay/onlay technique and veneers). Direct, cost-effective dispensing from a syringe. Can be very easily condensed and contoured due to its soft, elastic consistency. Does not stick to the instrument. Cured tempofill® 2 fillings are easily removed without damaging the preparation margins. Light curing, remineralising. Medical device Cl. IIa Colour: light-opaque

02117 -- Standard packing tempofill 2

implantlink® semi Classic



Provisional implant cement, resin based 4:1. For positive, occlusally stable cementing of restorations. Removal without damage due to perfectly tuned adhesive properties. Extremely low layer thickness for maximum fitting accuracy, effortless removal of excess material (large pieces), does not adhere to soft tissues. Highest marginal tightness due to highly polymerized, ductile resin structure, dual-curing, antibacterial, neutral in odour and taste.

03092 : cartridge mini-mix à 5 ml, 8 mixing cannulas, brown, 4:1, 1 flowchart

monoprint supra



VPS transfer silicone monophase, medium consistency, with activated surface, specially designed for implantology and fixation impressions with combined prosthetics. Free-flowing, thixotropic setting for easy coverage of abutments. Secure fixation of transfer aids by fast hardening at the end of setting, thermosensitive setting behaviour. Final hardness approx. 70 Shore A.

02525 : 2 x 50 ml, 2 cartridges à 50 ml, base + catalyst, 6 mixing cannulas, green

Fermin



Ready-to-use filling material for provisional sealing. Setting in the mouth under the effect of saliva, great adhesive strength in the cavity, excellent marginal sealing, easy to remove. Colour: white opaque

02054 : Standard packing jar of 15 ml 40 g

tempolink® clear



Transparent, temporary fixing cement, resin based 4:1, dual curing. Film-forming, therefore highest marginal tightness and easy removal. Distinctly reduced displacement resistance than with common cements. Flexible working times due to optional light curing. Especially suitable for veneers, crowns and bridges in the anterior tooth region, without any aesthetic impairment.

02593: Standard packing, Cartridge mini mix 5ml, mixing cannulas 8pcs.

Luxator®

PERIOTOME PERIODONTAL LIGAMENT KNIFE

Luxator Periotomes are the preferred instruments for performing extractions. Luxator Periotomes are specially designed periodontal ligament knives with fine tapering blades that compress the alveolar bone, cut the ligament and gently ease the tooth from its socket. The whole operation is performed with a minimum of tissue damage. Available in 8 blade sizes.

Prod No: 506330, Luxator Kit K4 - L-3C, L-3S, L-5C, L-5S, L10

Prod No: 506331, Luxator Kit K7 - L-2S, L-3C, L-3S, L-3CA, L-3IC, L-5C, L-5S, L-10



Luxator®

SHORT PERIOTOME THE ORIGINAL WITH A SHORTER BLADE

Attains the correct working position - even with smaller hands. The shaft is 10mm shorter than on regular Luxator Periotome. Preserved bone integrity and dramatically less trauma for your patients and their dentition. Available in 5 blade sizes.



Luxator®

FORTE ELEVATOR ERGONOMIC AND STRONG





FenderWedge®

PROTECTS THE ADJACENT TOOTH AND GINGIVA DURING PREPARATIONS

Prod No: 602750 - FenderWedge Assortment 4x36 pcs
 Prod No: 602751 - FenderWedge Small, orange, 36 pcs
 Prod No: 602752 - FenderWedge Medium, green, 36 pcs
 Prod No: 602753 - FenderWedge Large, yellow, 36 pcs
 Prod No: 602754 - FenderWedge X-small, lilac, 36 pcs
 Prod No: 602800 - FenderWedge Value Pack Small, orange, 100 pcs
 Prod No: 602801 - FenderWedge Value Pack Medium, green, 100 pcs
 Prod No: 602802 - FenderWedge Value Pack Large, yellow, 100 pcs
 Prod No: 602803 - FenderWedge Value Pack X-Small, lilac, 100 pcs
 Prod No: 602679 - Intro-Kit, FenderWedge & FenderMate, 8+20 pcs
 FenderWedge: X-Small 3 pcs, Small 3 pcs, Medium 1 pc, Large 1 pc
 FenderMate: Left Narrow 8 pcs, Left Regular 2 pcs, Right Narrow 8 pcs, Right Regular 2 pcs



FenderMate®

SECTIONAL MATRIX FOR CLASS II COMPOSITE RESTORATIONS

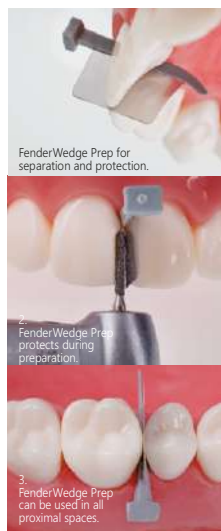
Prod No: 602770 - FenderMate Assortment, 4x18 pcs
 Prod No: 602771 - FenderMate Left Regular, green, 18 pcs
 Prod No: 602772 - FenderMate Left Narrow, light green, 18 pcs
 Prod No: 602773 - FenderMate Right Regular, blue, 18 pcs
 Prod No: 602774 - FenderMate Right Narrow, light blue, 18 pcs
 Prod No: 602804 - FenderMate Value Pack Left Regular, green, 100 pcs
 Prod No: 602805 - FenderMate Value Pack Left Narrow, light green, 100 pcs
 Prod No: 602806 - FenderMate Value Pack Right Regular, blue 100 pcs
 Prod No: 602807 - FenderMate Value Pack Right Narrow, light blue 100 pcs
 Prod No: 602679 - Intro-Kit, FenderWedge & FenderMate, 8+20 pcs
 FenderWedge: X-small 3 pcs, Small 3 pcs, Medium 1 pc, Large 1 pc
 FenderMate: Left Narrow 8 pcs, Left Regular 2 pcs, Right Narrow 8 pcs, Right Regular 2 pcs



FenderMate® Prime

PROTECTION AND MATRIX FOR PRIMARY TEETH

Prod No: 602815 - FenderMate Prime, Assortment, 2x18 pcs
 Prod No: 602816 - FenderMate Prime Short, neon yellow, 18 pcs
 Prod No: 602817 - FenderMate Prime Long, neon green, 18 pcs
 Prod No: 602808 - FenderMate Prime Value Pack Short, neon yellow, 100 pcs
 Prod No: 602809 - FenderMate Prime Value Pack Long, neon green, 100 pcs



FenderWedge® Prep

PROTECTS TOOTH AND PAPILLA DURING PREPARATIONS OF CROWNS AND VENEERS

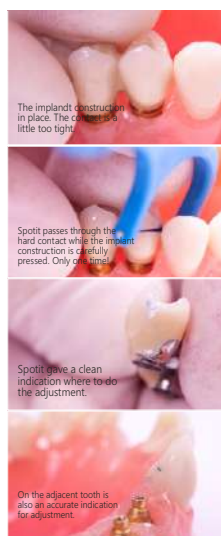
Prod No: 602749 - FenderWedge Prep, Grey, 36 pcs
 Prod No: 602811 - FenderWedge Prep, Value Pack, Grey, 100 pcs



FenderMate® Temp

PROTECTION AND MATRIX FOR TEMPORARY RESTORATIONS

Prod No: 602786 - FenderMate Temp, lilac, 18 pcs
 Prod No: 602813 - FenderMate Temp Value Pack, lilac, 100 pcs



Spotit®

C&B CONTACT FINDER

Prod No: 690112 Spotit Assortment, 9+9 pcs
 Prod No: 690110 Spotit Refill Straight, 18 pcs
 Prod No: 690111 Spotit Refill Angled, 18 pcs



Stik-n-Place®

MAINTAINS GRIP EVEN WHEN WET

Prod No: 539483 Stik-n-Place, 50 pcs

Authorised Importers & Distributors for:

DETAX
Made in Germany

DIRECTA
directadental.com

FGM
DENTAL GROUP

premier

Hu-Friedy


PRIMA DENTAL

How the best perform

**RELINING
MATERIAL
ROOT CANAL
INSTRUMENTS**

**FINISHING
AND
POLISHING**

**RESTORATIVE AND
FILLING MATERIAL**

**CROWN &
BRIDGE
MATERIAL**

Medicept
D E N T A L

MEDICEPT DENTAL INDIA PVT. LTD.

Unit no 207, 208, 209, Building No F8, Bhumi World Industrial Park, Pimpas, Maharashtra 421302, Maharashtra, India.
Tel: +91 2522 297777 / 2522 297999 • Email: info@mediceptdental.com • Website: www.mediceptdental.com

MEDICEPT UK LTD.

2nd Floor, Hygeia House, 66 College Road, Harrow, Middlesex, HA1 1BE, UK • Tel: +44 (0) 1923 251327
Fax: +44 (0) 1923 251334 • Email: info@mediceptdental.co.uk • Website: www.mediceptdental.co.uk

